



Rabbit anti Nucleophosmin(Paired S70) Polyclonal Antibody

Alternative Name(s): nan

Order Information

- **Description:** Nucleophosmin (NPM)Paired S70
- **Catalogue:** 630-550
- **Lot:** See label
- **Size:** 100ug/200ul
- **Host:** Rabbit
- **Clone:** nan
- **Application:** IHC(P), WB
- **Reactivity:** Hu, Ms, Rt, Bv

ANTIGEN PREPARATION

A synthetic peptide corresponding to AEAMNYEGSPIKVTLAT. This sequence is identical to human, mouse, rat.

BACKGROUND

Nucleophosmin (NPM) is a member of the nucleophosmin/nucleoplasmin family that shuttles between the nucleus and cytoplasm. This protein regulates the stability and transcriptional activity of p53 and acts as a molecular chaperone. It preferentially binds to denatured proteins and has been shown to stimulate DNA polymerase activity and control the duplication of centrosomes. The chaperone activity of nucleophosmin is regulated by protein kinase CK2 and promotes the release of denatured substrates from nucleophosmin. The phosphorylation of NPM is associated in its interaction with nucleolar proteins including nucleolin, protein P120, HIV-1 Rev protein, and hepatitis delta antigens.

PURIFICATION

The Rabbit IgG is purified by Epitope Affinity Purification

FORMULATION

This affinity purified antibody is supplied in sterile Phosphatebuffered saline (pH7.2) containing antibody stabilizer

SPECIFICITY

This antibody recognizes human Nucleophosmin (NPM)Paired S70 protein without the phosphorylation S70. It cross reacts to human, mice and rat.

STORAGE

The antibodies are stable for 24 months from date of receipt when stored at -20oC to -70oC. The antibodies can be stored at 2oC-8oC for three month without detectable loss of activity. Avoid repeated freezing-thawing cycles.

APPLICATIONS/SUGGESTED WORKING DILUTIONS*

- Western Blot: 0.1-1 µg/ml
- ELISA: 0.01-0.1 µg/ml
- Immunoprecipitation: 2-5 µg/ml
- IHC: 2-10 µg/ml
- Flow cytometry: Not tested
- Molecular Weight: 35.0
- Positive Control: Kidney Tissue
- Cellular Location: Cell Membrane

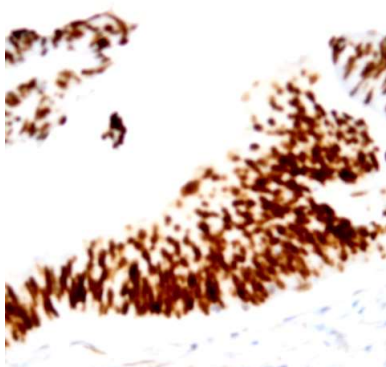
*Optimal dilutions should be determined by researchers for the specific applications.

FOR RESEARCH USE ONLY.

AbboMax, Inc 2528 Qume Drive, Suite 8, San Jose, California 95131, USA
1 408-573-1898 (Tel). 1 408-573-1858 (Fax). www.abbomax.com info@abbomax.com



DATA ATTACHMENTS



Immunohistochemistry: Human breast carcinoma (FFPE) stained with Rabbit anti-Nucleophosmin (NPM) (Paired S70) (Cat# 630-550) at 1:200 for 10 min @ RT. Staining of formalin-fixed tissue requires boiling tissue sections in 10 mM Citrate Buffer, pH 6.0 for 10 min followed by cooling at RT for 20 min.

REFERENCES

FOR RESEARCH USE ONLY.

AbboMax, Inc 2528 Qume Drive, Suite 8, San Jose, California 95131, USA
1 408-573-1898 (Tel). 1 408-573-1858 (Fax). www.abbomax.com info@abbomax.com